

Public Hearing Annual Report

February 2025

1

THRIVING
STUDENTS

2

ENGAGED
COMMUNITY

3

EMPOWERED
STAFF

4

SAFE & HEALTHY
ENVIRONMENT

Components of the Annual Report

- Texas Academic Performance Report
- PEIMS Financial Standards Reports
- District Accreditation Status
- Report on Violent or Criminal Incidents
- Information from the Texas Higher Education Coordinating Board

Access

Printed copies of the annual report will be available at:

Annual Report Locations

Central Office

Campus Front Offices

Texas Academic Performance Report

Electronically on the District Website www.crowleyisdtx.org/our-district/accountability-reports

Electronically on the TEA Website www.tea.texas.gov/perfreport/tapr/index.html

District and School Quality Reports

Electronically on the District Website www.crowleyisdtx.org/our-district/school-quality-reports



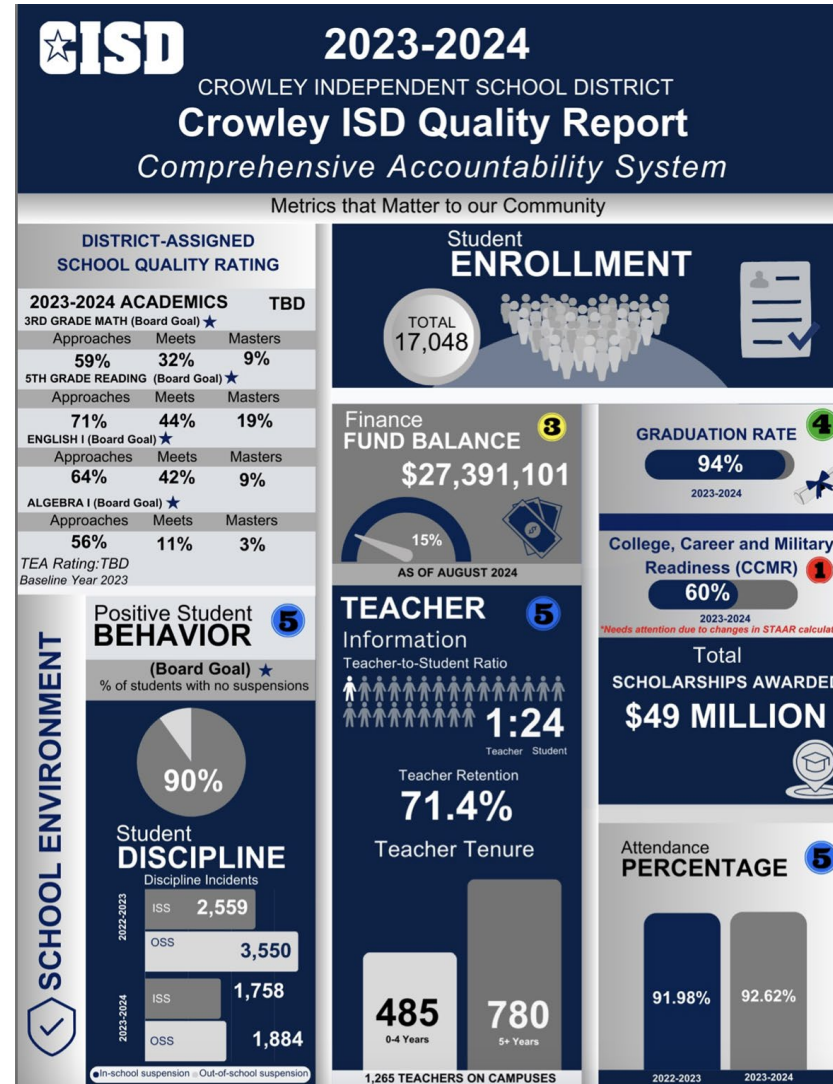
2024 District & Campus Accountability Ratings

As of December 2024, the TAPR does not include A–F ratings or Distinction Designations.

The issuance of the A–F ratings under 2024 rule is pending and subject to change.



District and School Quality Reports



Public Hearing Annual Report

February 2025

1

THRIVING
STUDENTS

2

ENGAGED
COMMUNITY

3

EMPOWERED
STAFF

4

SAFE & HEALTHY
ENVIRONMENT

District Instructional Priorities



**ALIGNMENT AND
ASSESSMENT**



**INSTRUCTIONAL
ENGAGEMENT**



**PROFESSIONAL
LEARNING**

ELEMENTARY

- Focused Alignment of Intervention and Enrichment
- Prioritization of Writing
 - Response to Text
 - Rubric Based Calibration
 - Connection to Reading
- Adjustment of Professional Learning Communities
 - Microteaching
 - Data Protocols

MIDDLE SCHOOL

- Block Schedule at all Four Campuses
- 6th Grade Math Daily
- Increased Time for Professional Learning Communities in Core Content
- Cross Campus Collaboration
- Restructured Instruction Within the 90 Minute Block
- Additional Instructional Specialist for Science
- Crowley Pride Unified Time
 - Advisory Time for Student Intervention and Enrichment

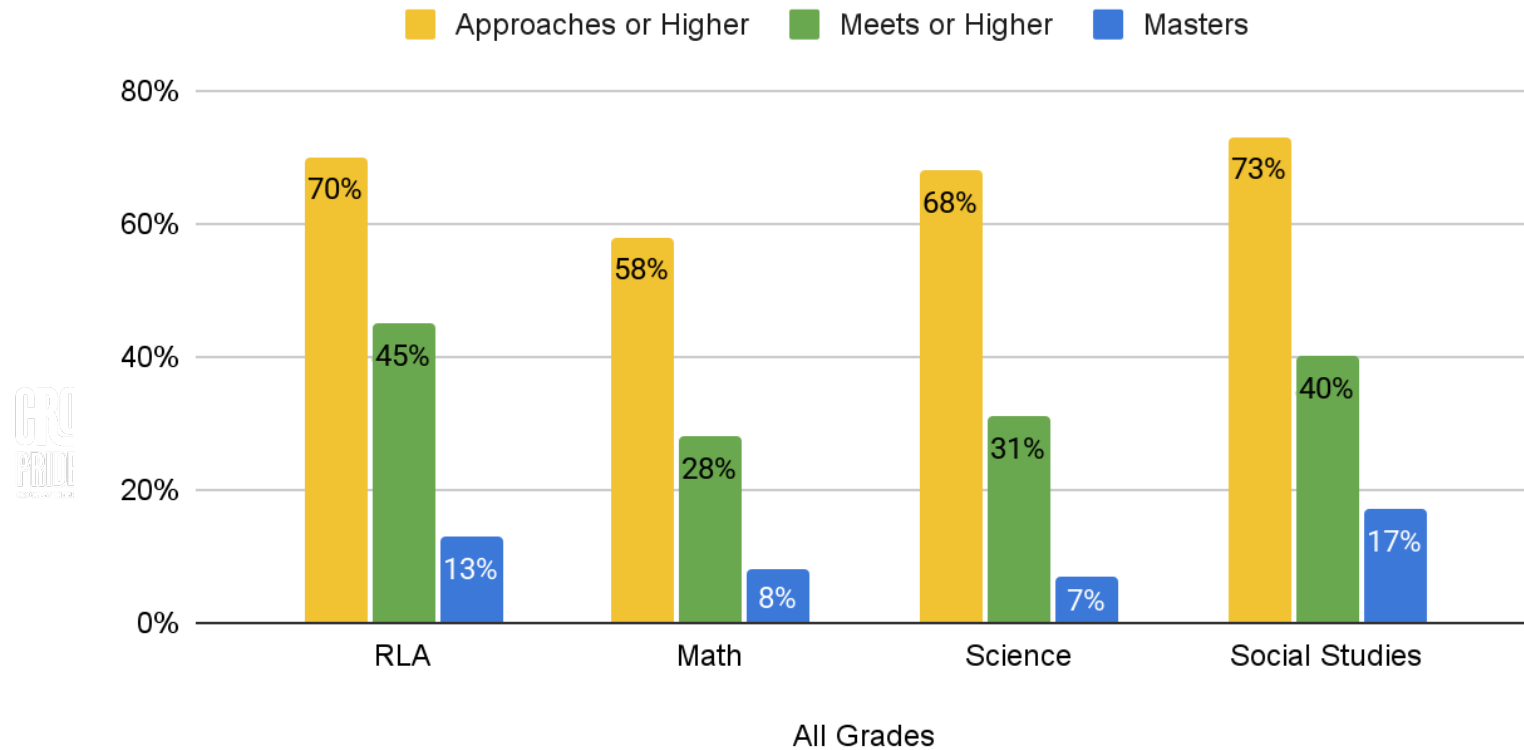
HIGH SCHOOL

- Daily Professional Learning Communities in Core Content
- Embedded Support and Increased Access for Post-Secondary Assessment
- Teacher Participation in Writing and Pacing in Biology
- Root Cause Analysis and Data Questioning Protocol
- Addition of the Special Assistant to the Superintendent for College, Career and Military Readiness



District Overview

2024 STAAR Performance



District Overview

